

# Los Angeles Regional Water Quality Control Board (LARWQCB) Sediment Management

---

MIACC meeting June 22, 2021

Emily Duncan, PhD

Los Angeles Regional Water Quality Control Board

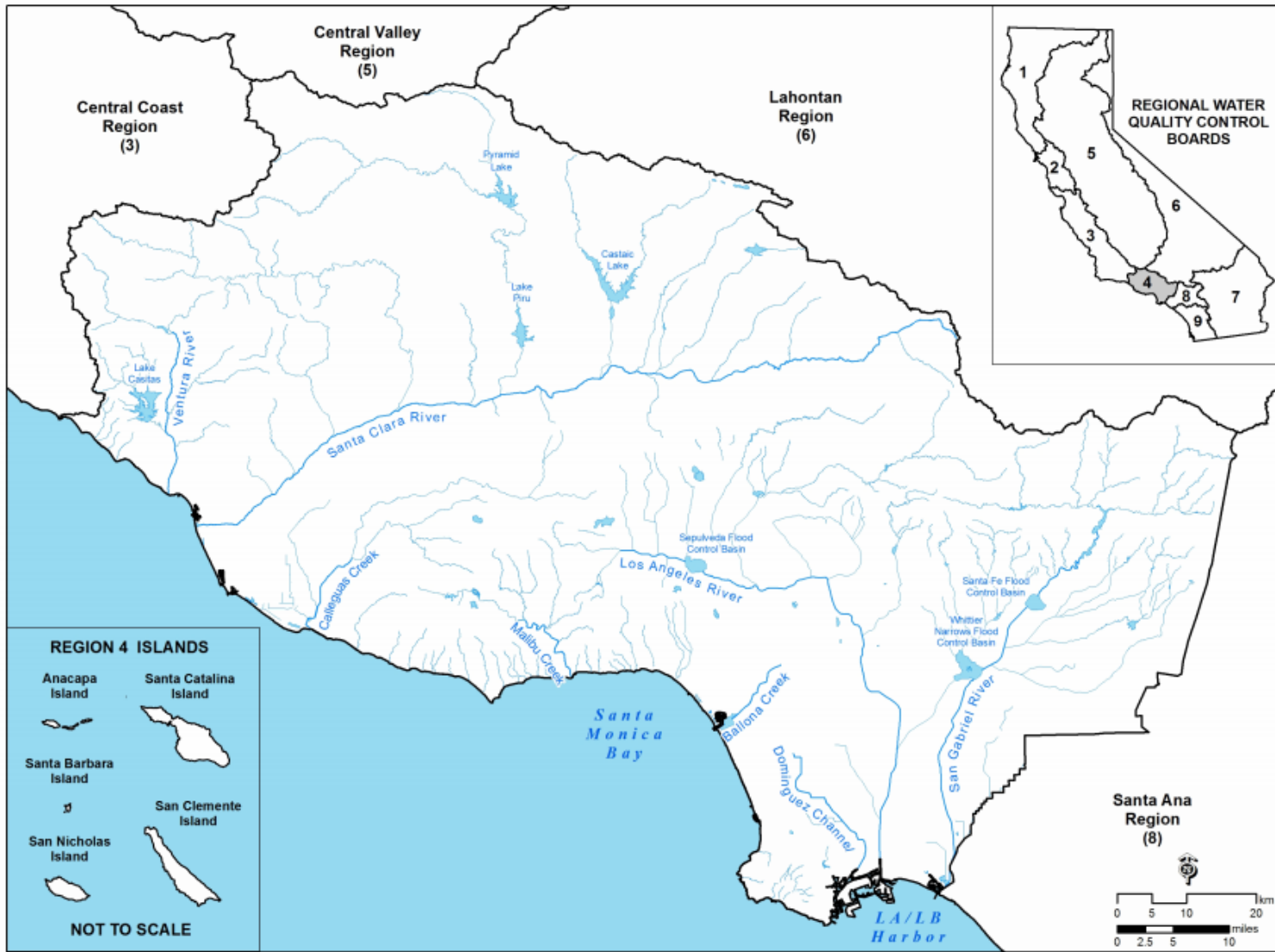
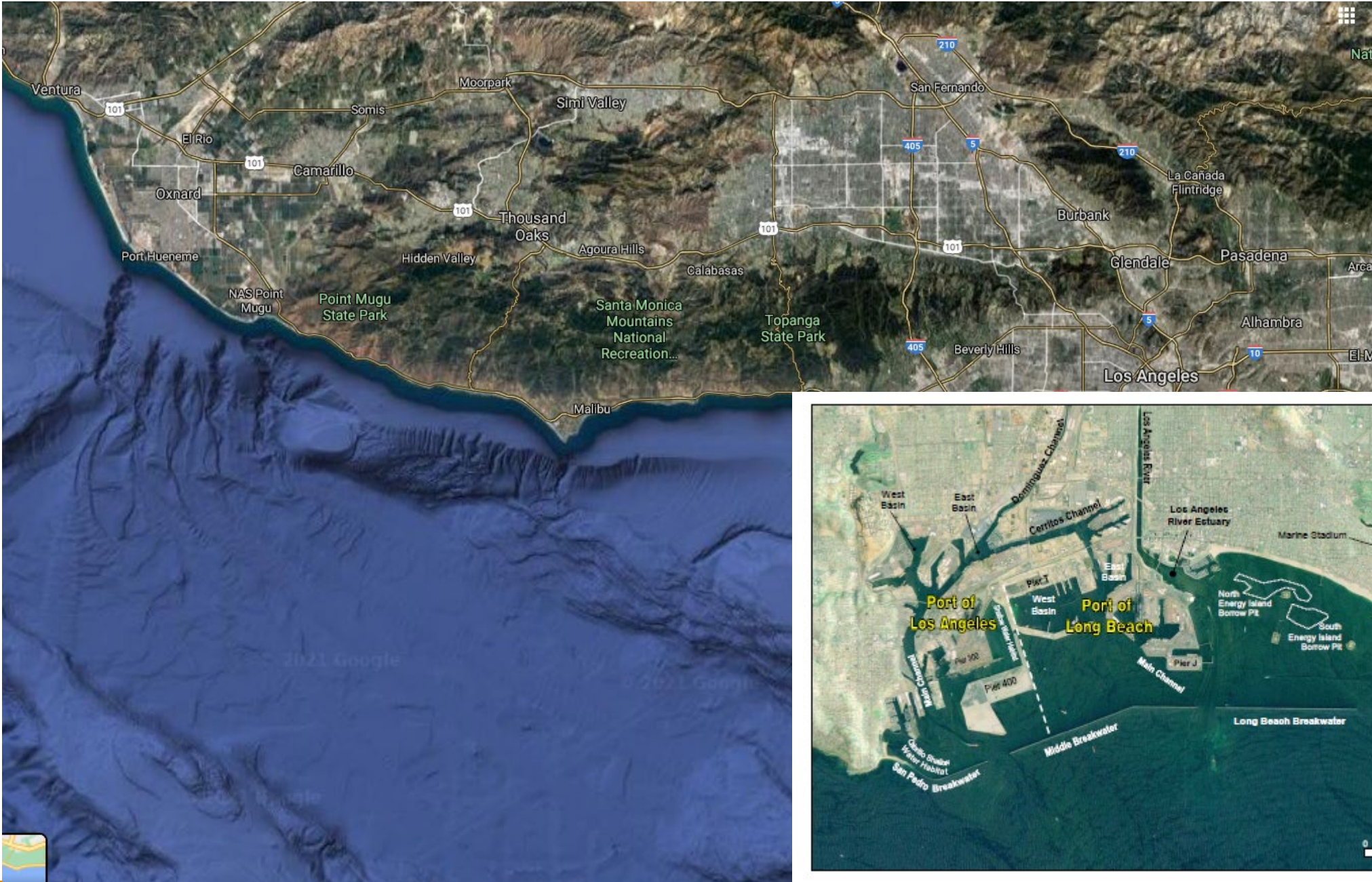


Figure 1-1. Regional Map: Regional Water Quality Control Board, Los Angeles Region.

# Introduction

# Ports in the region



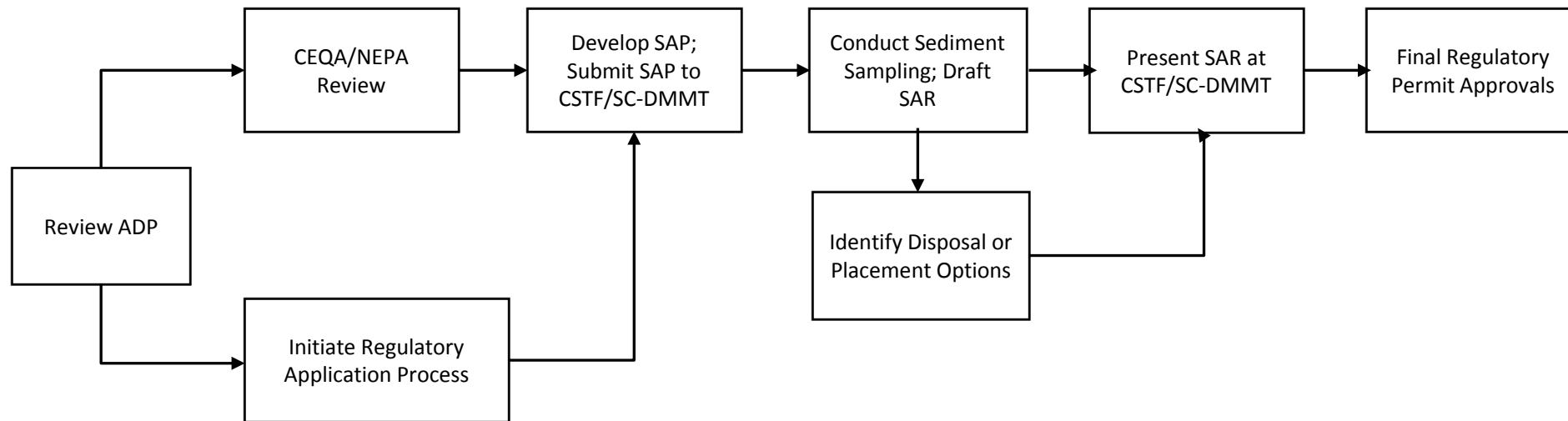
Los Angeles Regional Contaminated Sediments Task Force (CSTF)  
and  
Southern California Dredged Material Management Team (SC-  
DMMT)

---



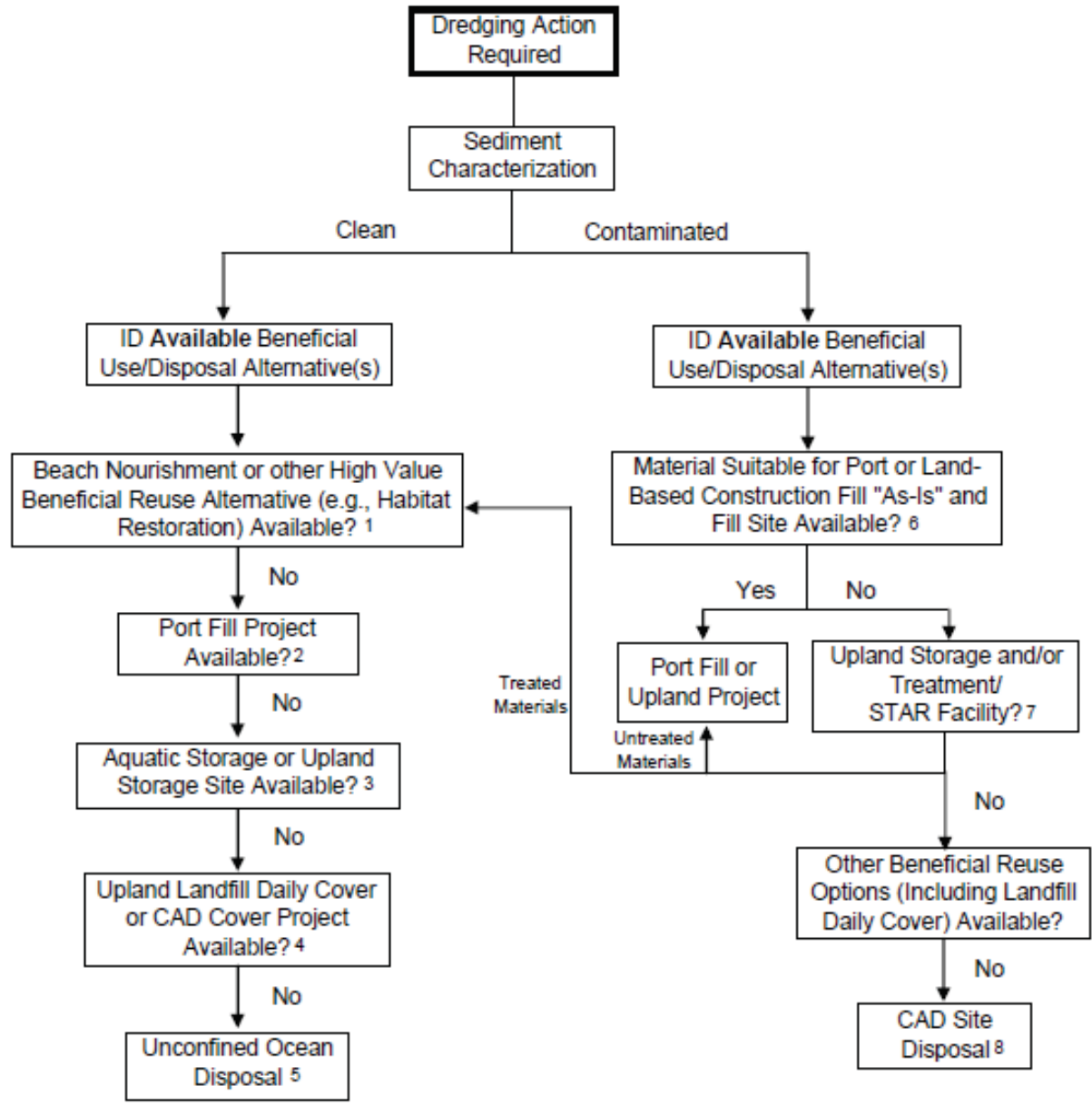
# Implementation of a Dredging and Fill Project Permitting

## Permitting



ADP – Application of Development Project  
CEQA – California Environmental Quality Act  
NEPA – National Environmental Policy Act  
SAP – Sampling and Analysis Plan

CSTF – Contaminated Sediment Task Force  
SC-DMMT – Southern California Dredged Material Management Team  
SMP – Sediment Management Plan



# CSTF Dredged Material Management Decision Tree



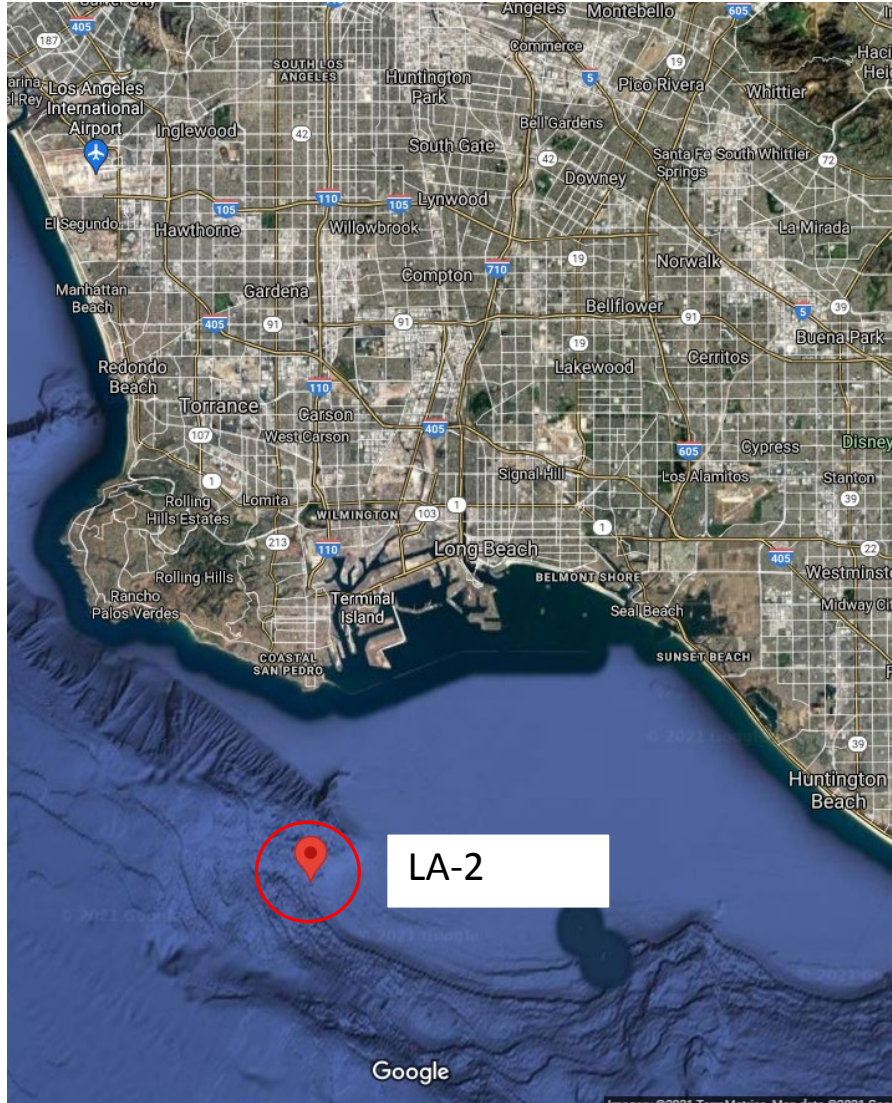


# Evaluation of Dredged Material

---

## Evaluation process

- Physical Analysis – Grain Size
- Chemical Analyses and Comparison to Thresholds
  - Effects Range Low (ERL)
  - Effects Range Median (ERM)
- Biological Analysis
  - Solid Phase testing
  - Suspended Particle Phase testing
  - Bioaccumulation testing



# USEPA LA-2 Ocean Dredged Material Disposal Site

LA-2 ocean disposal site designated in 1977

Baseline monitoring prior to site designation

Routine monitoring every 5 years (decreased to every 10 years after the 2005 re-designation)

No significant impacts to the marine environment

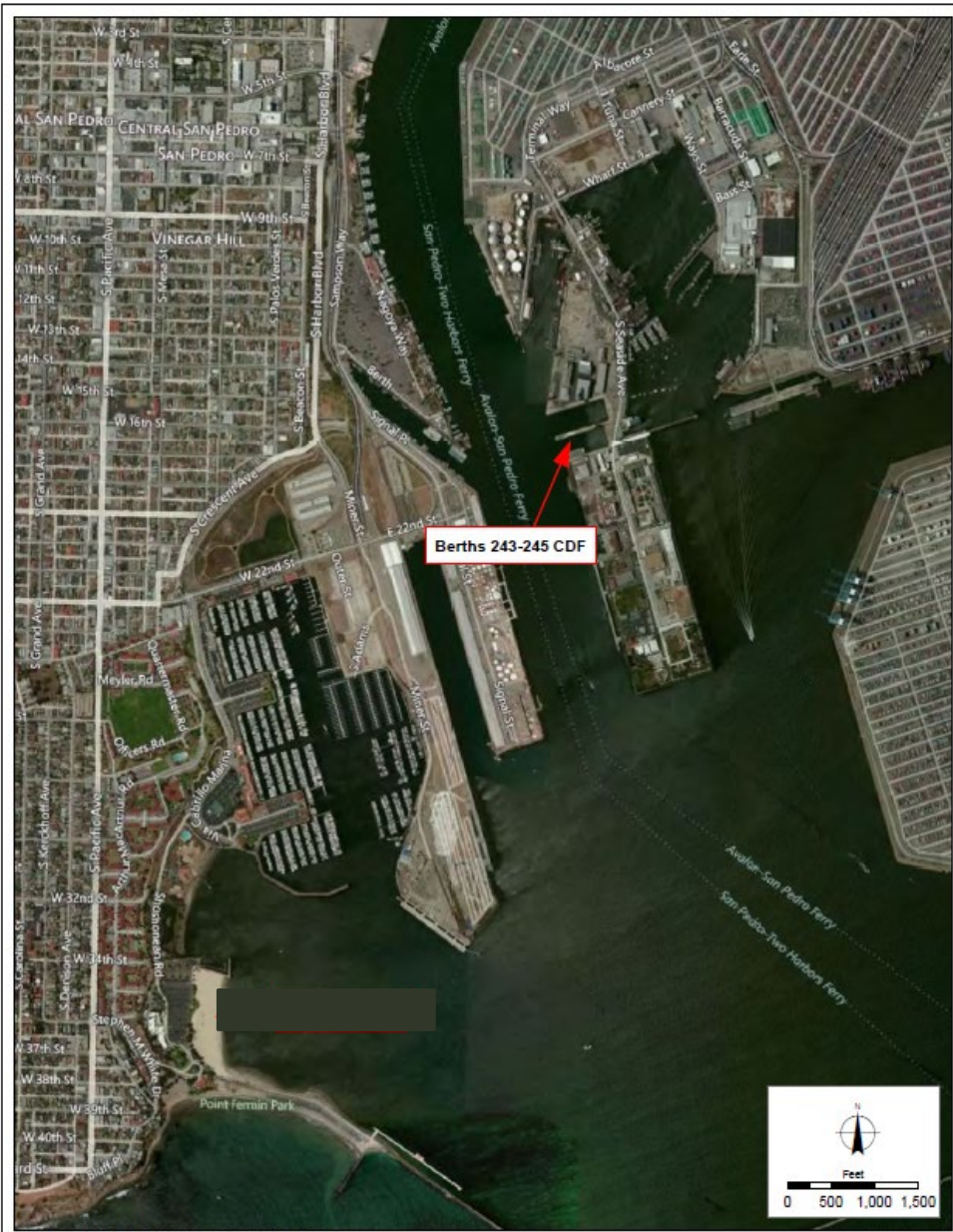


# Port of LA Confined Disposal Facility

Port converted former Southwest Marine Shipyard site to a CDF in 2009

Engineered to provide contained disposal of @ 345,000 cubic yards of “contaminated” dredged material

Trying to preserve space in the CDF





# Conclusions

---

- Dredged Material Management is a collaborative effort
- Disposal options vary depending on chemistry

Photo Credit: USACE  
<https://www.spl.usace.army.mil/Media/Images/igphoto/2001709472/>

Questions?